

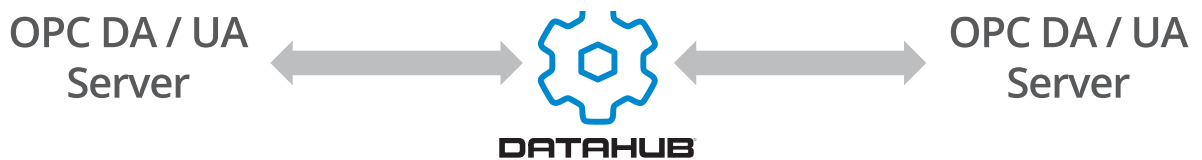


# DataHub<sup>®</sup> OPC Bridge

CONNECT DATA ACROSS DIFFERENT OPC SERVERS

## OPC server to OPC server connectivity

Have you been looking for a way to connect OPC servers? Do you need to allow one piece of equipment to communicate directly to another? Now, with just a few clicks of the mouse in the DataHub OPC Bridge, you can link OPC servers with each other in a single cohesive group.



## Benefits and Features

- Connect any number of OPC servers
- All data from all OPC servers available to any OPC client
- Also works with non-OPC data sources and clients
- Data can be modified using linear transformations
- One-way or two-way data flow
- Lets you create new tags if necessary
- Multi-threading means slow-performing OPC servers will not bog down the system
- Configure bridges across a network using OPC tunneling

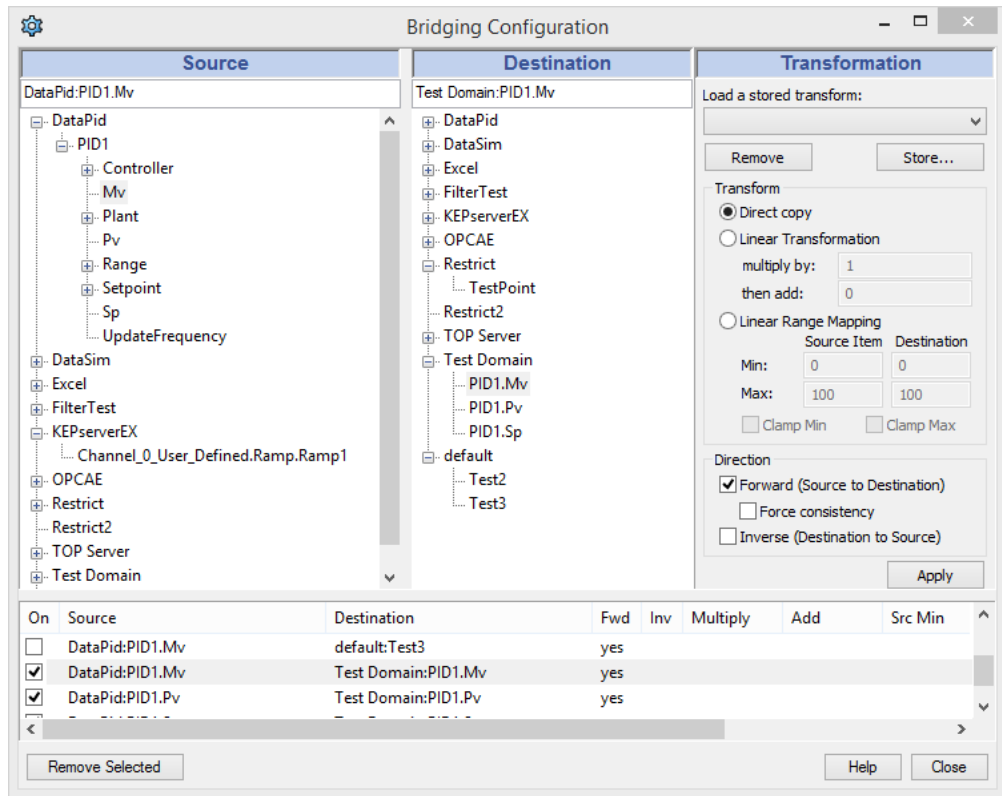


## Connect multiple servers and clients

Data from any number of OPC servers and other data sources is pooled into a single, uniform data set that can be accessed by any number of clients. In addition to OPC (DA and/or UA), other protocols such as TCP, HTML, XML, ODBC, and DDE are supported, allowing connections to databases, email, spreadsheets, and the web.

## Scale or modify your data

Convert temperatures, volumes, pressures, or perform any other type of linear transformation. Or you can make more complex data modifications using a powerful built-in scripting language.



## Ordering Information

### PRODUCT

DataHub OPC Bridge

DataHub OPC UA Bridge

### CODE

DHBRG

DHBRGUA

### DESCRIPTION

DataHub Core features with OPC DA and Bridging

DataHub Core features with OPC UA and Bridging



Official UK Agent

[sales@mac-solutions.net](mailto:sales@mac-solutions.net)

+44 1527 529774

Skkyne®, SkkyHub™, DataHub®, the Skkyne and DataHub logos, WebView™ are either registered trademarks or trademarks used under license by the Skkyne group of companies, including Cogent Real-Time Systems Inc., a wholly-owned subsidiary of Skkyne Cloud Systems, Inc. ("Skkyne")